



Indian Institute of Management Kozhikode
IIMK Campus P O, Kozhikode 673 570, Kerala, India
website: www.iimk.ac.in

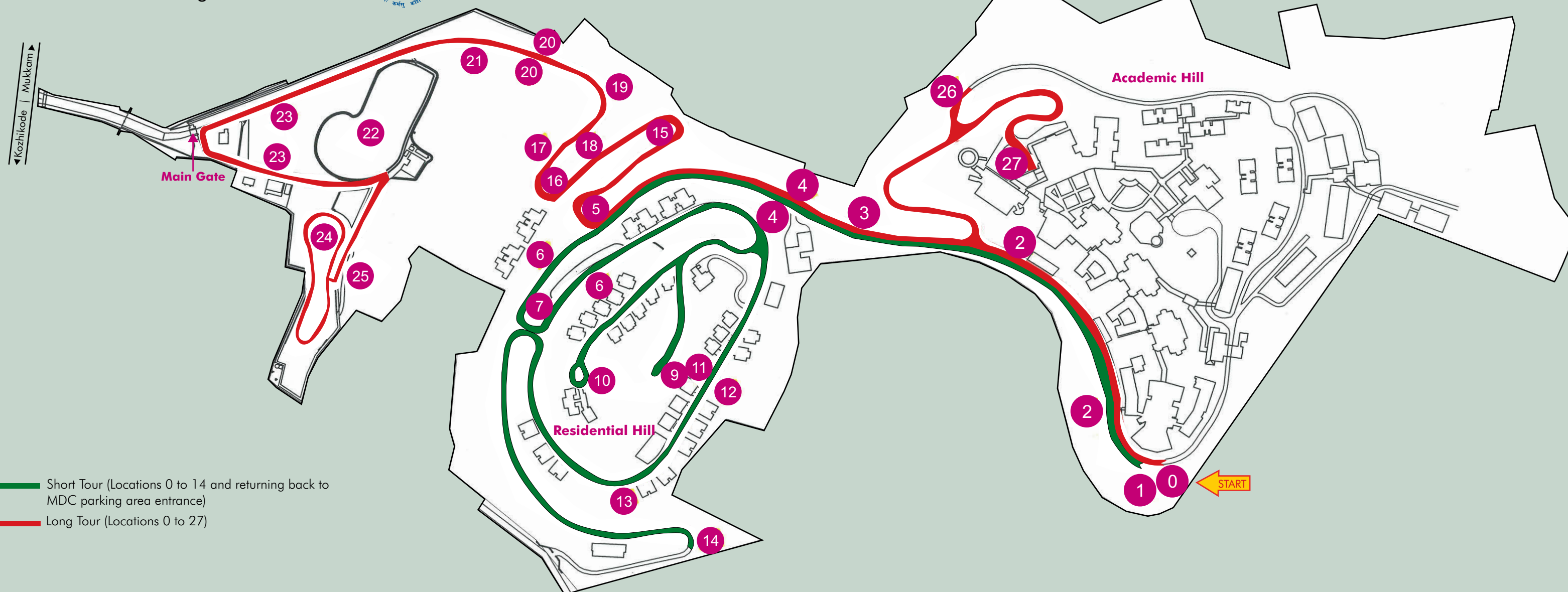
CAMPUS WALKING TRAIL MAP

Indian Institute of Management Kozhikode



CAMPUS WALKING TRAIL MAP

Indian Institute of Management Kozhikode



- Short Tour (Locations 0 to 14 and returning back to MDC parking area entrance)
- Long Tour (Locations 0 to 27)

Location No.	Description/ Attractions
0	Campus walk starting point (MDC parking area entrance)
1	Downhill view
2	Rubber trees
3	Mantharam (Bauhinia acuminata) tree - (Opposite to Milma Parlour)
4	Jack fruit, Malayan apple (Syzygium malaccense), Manimaruthu (Lagerstroemia reginae), Almond (Terminalia catappa), Gulmohar (Delonix regia), Peral (Ficus benghalensis), Mango, Kanikonna (Casia fistula) trees (In front of Commercial Plaza & Near Milma Parlour)
5	Peral (Ficus benghalensis) tree and Children's Park 1 ('T' Junction). Nice downhill view point (IIMK pond, Play ground and Kunnamangalam town)
6	Gooseberry trees ('H' Junction). Also, nice downhill view point (IIMK pond, Play ground and Kunnamangalam town)
7	Children's Park 2
8	Acacia (Acacia auriculiformis) groove (Opposite to children's park 2 and Apartment block II)
9	Hill Top (serene atmosphere with sun rise & sun set view; Cashew & Gooseberry trees garden, Sandal wood trees, Kunnamangalam town view, Academic hill view, Birdwatch)
10	Guest house I (On the way Guava, Custard apple, Irrumbanpuli (Averrhoa bilimbi), Jackfruit trees. Good place to watch birds early in the morning. Jamia Markazu Ssaquafathi Ssunniya, the leading academic and charitable organization in India is visible from this location)

11	Acaciagroove (after Guest House 2 & Director's Bungalow)
12	Thick forest vegetation and Birdwatch area (opposite to quarter no. A6A)
13	Acacia groove (adjacent to quarter no. C5B)
14	Thick forest vegetation (curve leading to second gate)
15	Banyan (Ficus religiosa) and Malayan apple trees (curve after children's park 1)
16	Fig, Almond, Peral (Ficus benghalensis), Mango, Mantharam, Manimaruthu & Asoka (Saraca ashoca) trees (Front of Apartment block I)
17	Rain water catchment area for pond and thick forest vegetation (Left of road after Apartment block I)
18	Manimaruthu tree lane and Naaval/Jamun (Syzygium cumini) trees
19	Teak (Tectona grandis) tree plantation
20	Gooseberry trees (on both sides of the road)
21	Areca nut plantation and rain water catchment area for IIMK pond with thick forest vegetation
22	Rainwater harvesting Pond 1
23	Oongu (Pongamia pinnata) trees (on left side of the road along the play ground)
24	Rainwater harvesting Pond 2
25	Rain water catchment area for IIMK pond with thick forest vegetation
26	Beautiful downhill view (Road leading to hostels)
27	Arjuna statue, Waterfall, Circle of contemplation (Campus Walk ends)

A Short Description of Trees

Tree Name	Description
Acacia	Ear leaf Acacia. Origin is Australia. Used for landscaping
Almond	Almond oil is extracted from the seed
Arayal	Considered sacred by the followers of Hinduism, Jainism and Buddhism
Arecanut	Grows in tropical Asia & parts of East Africa. Betel nut is often chewed wrapped in betel leaves
Asoka	Holy tree of Indians having medicinal values
Cashew	Tropical evergreen producing cashew nut and cashew apple
Fig	Bears fig fruit. Leaves are used for fodder
Goose berry	Fruits are rich in vitamin 'C' and having antiviral & antimicrobial property
Gulmohar	Flowering tree. Known as flame of the forest
Jackfruit	Popular fruit item in tropical regions of India
Jamun	Ever green tropical tree. Bears fruit tasting sweet & lowering blood glucose
Kanikonna	Golden shower tree. National tree of Thailand and state flower of Kerala Used in herbal medicines
Malayan apple	National fruit of Cuba
Manimaruthu	Small medium tree bearing white/ purple flowers during summer season. Also called Pride of India
Mantharam	Flowering tree. Also known as Camel foot plant
Oongu	Ever green plant with cooling effect
Peral	National tree of India. Largest tree of the world by canopy coverage
Teak	Durable & water resistant hard wood for industrial purposes